



SWEDISH LLOYD

England—Sweden—England

(London—Gothenburg—London)

No. 12

APRIL—SEPTEMBER 1951

SWEDISH  LLOYD

Gothenburg

LONDON—TILBURY—GOTHENBURG

AND VICE VERSA

APRIL—SEPTEMBER 1951

Patricia

(Capt. A. E. Pehrson)

Gross Reg. Tons .. 7,710
Length 454'3"
Breadth 58'0"
Passenger capacity 408

Saga

(Capt. S. Lindhé)

Gross Reg. Tons .. 6,687
Length 420'10"
Breadth 55' 0"
Passenger capacity 376

Britannia

(Capt. N. Walter)

Gross Reg. Tons .. 4,705
Length 376'0"
Breadth 50'0"
Passenger capacity 288

Suecia

(Capt. E. Norrman)

Gross Reg. Tons .. 4,705
Length 376'0"
Breadth 50'0"
Passenger capacity 288

SWEDISH LLOYD

PASSENGER DEPARTMENT:

Västra Hamngatan 19,

GOTHENBURG

Telegrams: "Passage" — Telephone: 17 43 00

STOCKHOLM OFFICE:

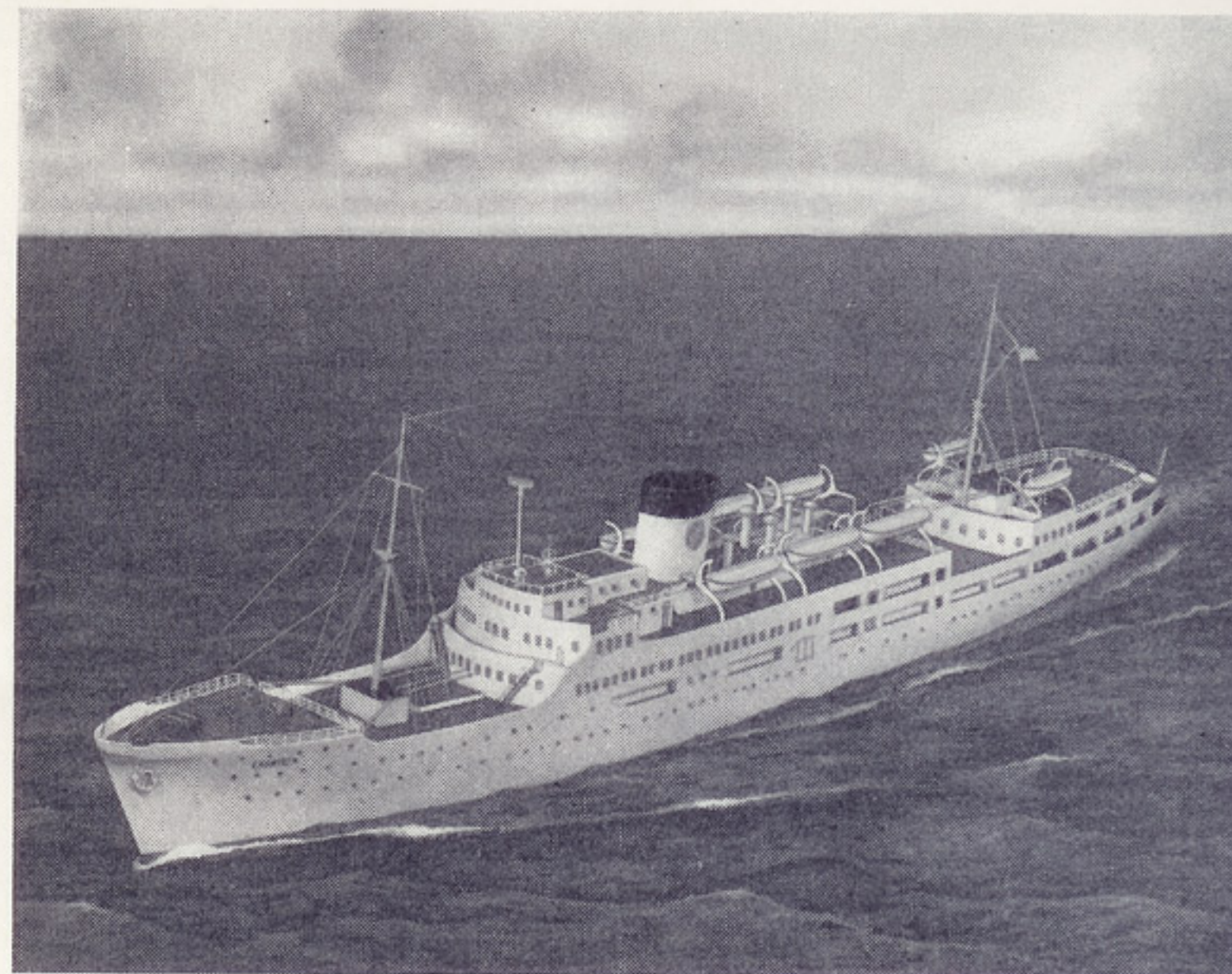
Gustaf Adolfs Torg 18

Telegrams: "Svenskalloyd" — Telephone: 23 45 45

GENERAL AGENTS IN LONDON:

The British & Northern Shipping Agency, Ltd.,
Marlow House, Lloyd's Avenue, E.C.3.

Telegrams: "Agbrinor" — Telephone: ROYal 3161



s/s "Patricia".

For the first time in the existence of the Swedish Lloyd Steamship Company, four vessels will maintain the service on the London—Gothenburg line this season. S/s "Patricia", the new flagship of the Line, is the largest vessel regularly crossing the North Sea and no efforts have been spared to make the vessel as comfortable and attractive as possible. It is, therefore, the Company's sincere hope that "Patricia" will not only add to the excellent reputation for comfort and popularity previously established by the "Saga", "Suecia" and "Britannia" but, at the same time, form another strong link in the bond of friendship between England and Sweden.

During the summer season 1951 there will be two to four sailings a week in each direction.

The voyage from Tilbury to Gothenburg takes about 36 hours, of which 32 hours are on the open sea.

Time-tables

A detailed time-table for the period April—September 1951 is found on pages 12—15.



Passengers to and from most places in Sweden, as well as Oslo and Copenhagen, can reach or leave these points on the day of the ship's arrival at, or departure from, Gothenburg.

Tickets and fares

The ordinary fares will be found on the accommodation plans at the end of this booklet. Tickets for accommodation reserved in advance should be paid for *not later than 14 days* before the vessel's date of departure.

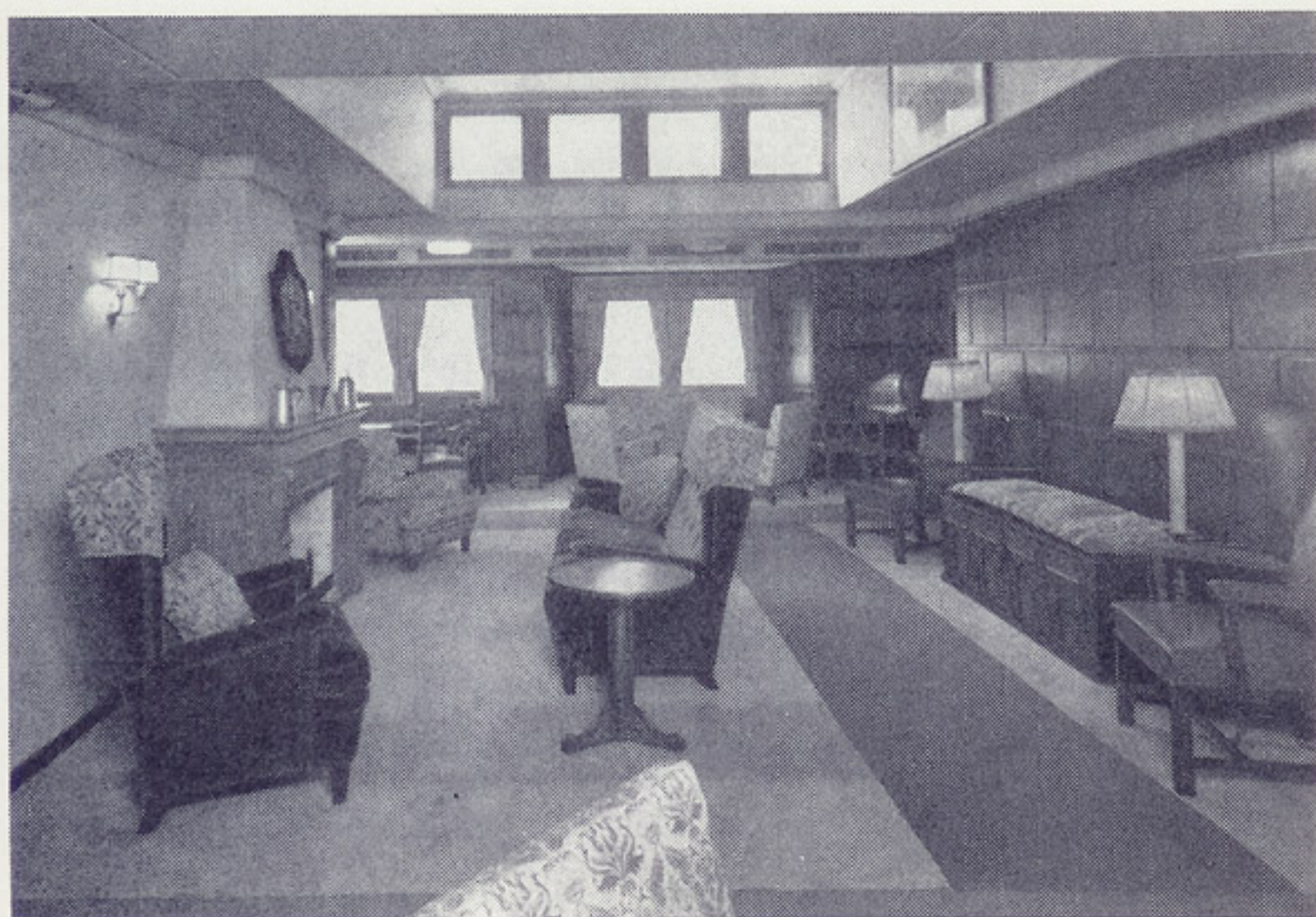
The railway ticket London (St. Pancras Station)—Tilbury or vice versa is included in all fares except for passengers who bring motorcars or motorcycles according to the regulations on pages 16—18. No refund is allowed on unused railway tickets.

Advantageous through fares are available between London and Swedish West Coast stations south of Gothenburg, all stations in Scania and Oslo, as detailed on pages 11 and 16.

No rebate is allowed on return tickets. If a berth for the return voyage is not booked in advance, accommodation cannot be guaranteed. Travellers on through tickets are subject to the local regulations of the connecting services.



m/s "Saga", the first class Smoking Saloon.



Cancellations. When the vessels are fully booked the following cancellation charge on the original fare of the ticket is made:

If cancelled on the day of departure 25 %
If cancelled one or two days before
departure 10 %

Special cancellation regulations are in force for parties.

No refund can be made if passengers fail to turn up at departure.

Motorcars, motorcycles and bicycles, brought by passengers for their own use are conveyed at low charges — under certain conditions free of charge — see page 18.

Catering



Swedish Lloyd's fares include the following meals on board:

Day of departure: dinner.

At sea: breakfast, lunch,
tea and dinner.

Day of arrival: breakfast.

Gratuities are not included.

Departure from London to Tilbury (St. Pancras Station)

A representative of the Company travels on the boat-train from St. Pancras Station to Tilbury.

Arrival at Gothenburg

On arrival of the vessel at Gothenburg, passengers to Stockholm by train 8.25 a.m. are conveyed free of charge to the Central Station by bus.

Departure from Gothenburg

Representatives of the Company meet the connecting trains from Stockholm, Oslo, Malmö, and Copenhagen at the Central Station, Gothenburg.

Customs and passport authorities will be present at quay side from 4 p.m. when embarkation commences.

Arrival at Tilbury and London

(St. Pancras Station)

Representatives of the Company meet the vessel at Tilbury. The journey from Tilbury to London is made by special boat-train, "Swedish Lloyd Special", and a representative travels on the train to St. Pancras Station.

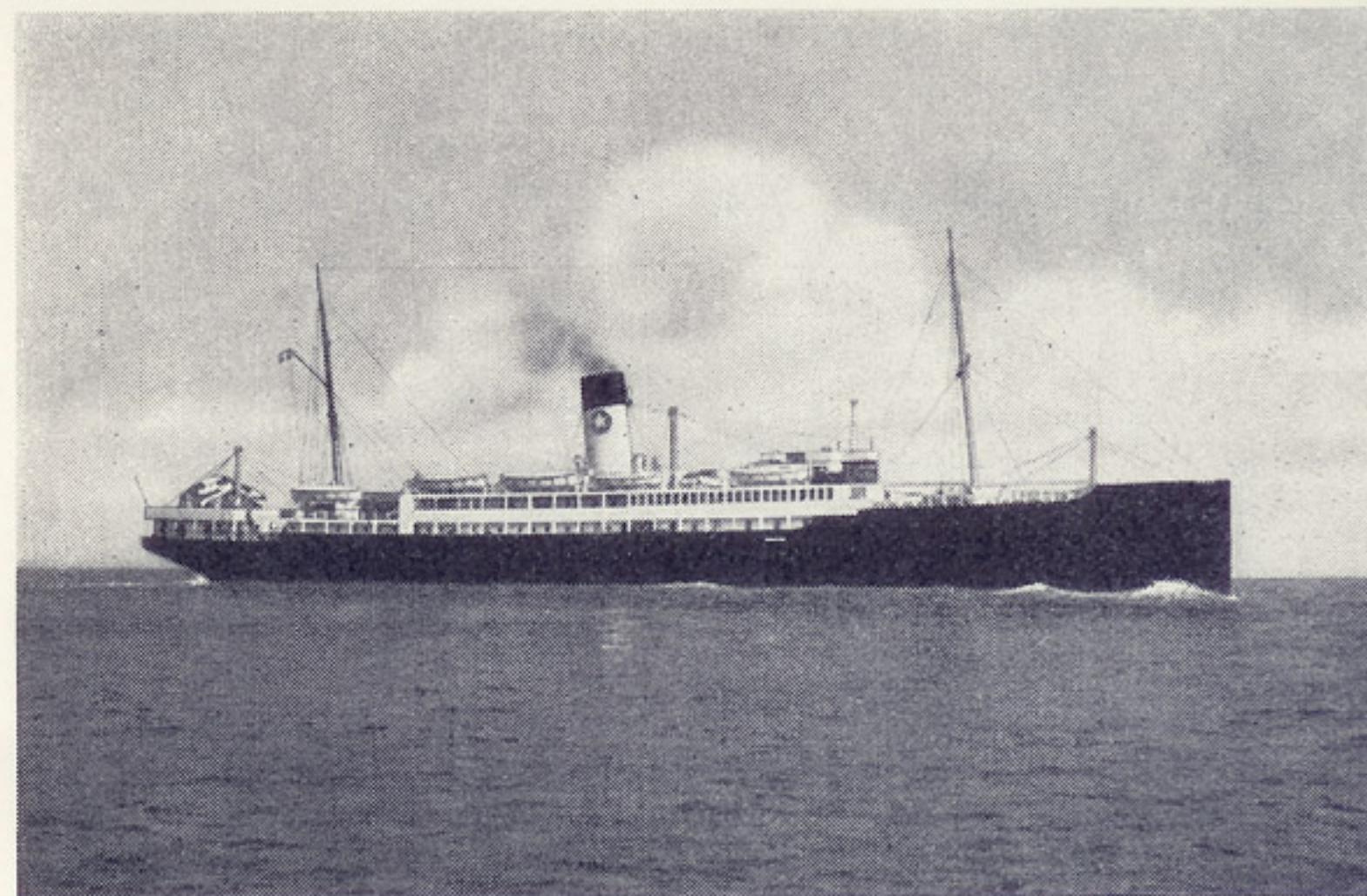
Unaccompanied children

If requested in advance, the Company's representative will take care of unaccompanied children at St. Pancras Station, Tilbury and Gothenburg.

Travellers must have a valid passport. British subjects of the United Kingdom, as well as citizens of several other countries, are now relieved of the necessity of a Swedish visa provided their stay in Sweden does not exceed three months. Under present conditions, however, travellers are advised to ascertain the position well beforehand, and those requiring visas should apply for same in good time.

Currency

On account of the regulations of the British Government all payments on board must be made in Swedish currency. Only travellers' cheques payable in Sweden will be changed by the Steward. English currency notes and/or



s/s "Britannia" — s/s "Suecia".

money cannot be accepted. With the approval of the Bank of England the Swedish Lloyd Steamship Company have arranged to supply passengers with cash vouchers available for payments on board their vessels for refreshments, tobacco and gratuities. The use of these vouchers enables passengers to save their travelling allowance. The vouchers in question are not exchangeable for cash on board the ships. They are sold in sets of varying denominations, totalling Swedish Kronor 14:40 per set, for which the charge is £1.0.0., and passengers will be allowed to purchase them to a value of maximum 20 % of their steamer fares. They are obtainable from travel agents when purchasing passage tickets, also in case of need from the Swedish Lloyd representative on the boat-train between St. Pancras Station and Tilbury. Unused coupons will be refunded in sterling only by the Issuing Office whose stamp they bear.

Always consult your travel agency or your bank concerning the present currency regulations.

Passengers are requested, in their own interest, to comply strictly with the regulations made by the authorities.

Customs, passport and currency control

Passengers should note that all luggage, including registered luggage, is examined by the Customs not only on arrival at Gothenburg and Tilbury but also before departure from Tilbury and Gothenburg. All Customs examination of luggage takes place ashore. The British Customs authorities at Tilbury do not allow any passengers ashore until all luggage has been unloaded, and it is therefore in each passenger's own interest to see that his luggage is packed and ready to be taken ashore before the ship berths. Travellers from Gothenburg to London should note that registered luggage which is not presented for examination at Tilbury is retained there. The Company is not responsible for luggage which is not examined before departure and which for this reason is not taken on board.

View of the harbour, Gothenburg.



Luggage

Passport and currency control takes place:
On the voyage from London to Gothenburg:
at Tilbury — in the Customs Hall before embarkation;

at Gothenburg — on board the ship before disembarkation.

On the voyage from Gothenburg to London:
at Gothenburg — in the shed alongside the ship before embarkation;

at Tilbury — on board the ship before disembarkation.



Hand luggage. Only hand luggage which is required during the voyage may be taken into the cabins.

Registered luggage. Luggage which is not wanted or which cannot be placed in the cabins is registered from London (St. Pancras Station) to Gothenburg, Stockholm, Malmö, Hälsingborg, Norrköping, Örebro, Uppsala, Oslo, Helsingfors and Åbo or vice versa at the following charges:

in the direction from London	1 s. per package
» » » » Gothenburg	Kr. 1:—
	per ticket.

For these registration fees 100 lbs. (45 kgms.) may be taken from London (St. Pancras Station) via Tilbury to Gothenburg or vice versa. Excess weight is charged at the rate of £0.5.2 per 22 lbs. (10 kgms.) or part thereof (in direction from Gothenburg Sw. Kr. 3:75). Children who travel half fare are allowed 50 lbs. (22 kgms.) without excess charge.

Regarding registration of luggage to Stockholm, Malmö, Hälsingborg, Norrköping, Örebro, Uppsala, Oslo, Helsingfors and Åbo special rules from the local authorities will apply for the free allowance.



The Royal Palace, Stockholm.

Other registration fees:

	<i>From London</i>	<i>From Gothenburg</i>
Bicycle	£0.16.3	Kr. 11: 80
Tandem	» 1. 4.4	» 17: 65

Crates, merchandise, furniture, etc. are not regarded as luggage and must therefore be sent as freight. Travellers are recommended to apply to a forwarding agency who will arrange the necessary Customs papers, transport etc. in either direction.

In London luggage should be registered at St. Pancras Station *not later than 30 minutes* before the boat train's departure. Registration cannot take place at Tilbury.

On the journey from Gothenburg luggage should be registered at Gothenburg harbour *not later than 30 minutes* before the departure of the vessel. The registration office is open from 4 p.m. on days of sailing.

In Gothenburg, registered luggage may be claimed in the shed alongside the vessel's mooring place up to 2 hours after arrival. In London registered luggage should be claimed *immediately* after the train's arrival at St. Pancras Station.

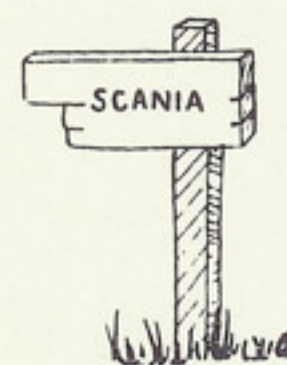
At all Swedish railway stations luggage must be handed in for registration latest 30 minutes before the train's departure.

Registered luggage is not accessible during the voyage.

To facilitate the identification of hand luggage as well as registered luggage in the Customs sheds at Tilbury and Gothenburg, each item should have attached one of Swedish Lloyd's luggage labels, bearing the *correct* initial letter of passenger's name.

THROUGH FARES

Through fares between London and South Sweden



Passengers from London to Scania or stations along the Swedish West Coast Railway, or vice versa, can obtain a railway ticket from Gothenburg to the destination or vice versa at an extra charge of 7 s. 6 d. or Kr. 5:— respectively. First class passengers receive second class railway tickets and second or third class passengers third class railway tickets. These railway coupons *must be applied for* at the time of booking the boat ticket.

Marstrand, a favourite yachting centre.



London—Gothenburg

Boat-train leaves St. Pancras Station
at 3.55 p.m.

The vessel leaves Tilbury at 6.30 p.m.

On double sailings the boat train for the "Saga" or the "Patricia" leaves St. Pancras Station at 5.00 p.m. and the vessel leaves Tilbury at 7.30 p.m. except May 5 when the boat train for the "Saga" leaves at 3.55 p.m. and for the "Britannia" leaves at 5.00 p.m.

April	4	Wednesday	Britannia
"	7	Saturday	Suecia
"	11	Wednesday	Britannia
"	14	Saturday	Suecia
"	18	Wednesday	Britannia
"	21	Saturday	Suecia
"	25	Wednesday	Britannia
"	28	Saturday	Suecia
"	30	Monday	Britannia
May	5	Saturday	Saga
"	5	Saturday	Britannia
"	10	Thursday	Saga
"	12	Saturday	Suecia
"	17	Thursday	Saga
"	19	Saturday	Britannia
"	24	Thursday	Saga
"	26	Saturday	Suecia
"	28	Monday	Patricia
"	31	Thursday	Saga
June	2	Saturday	Britannia
"	2	Saturday	Patricia
"	5	Tuesday	Saga
"	7	Thursday	Patricia
"	9	Saturday	Suecia
"	9	Saturday	Saga
"	12	Tuesday	Patricia
"	14	Thursday	Saga
"	16	Saturday	Britannia
"	16	Saturday	Patricia
"	19	Tuesday	Saga
"	21	Thursday	Patricia
"	23	Saturday	Suecia
"	23	Saturday	Saga
"	26	Tuesday	Patricia
"	28	Thursday	Saga
"	30	Saturday	Britannia
"	30	Saturday	Patricia
July	3	Tuesday	Saga
"	5	Thursday	Patricia
"	7	Saturday	Suecia

July	7	Saturday	Saga
"	10	Tuesday	Patricia
"	12	Thursday	Saga
"	14	Saturday	Britannia
"	14	Saturday	Patricia
"	17	Tuesday	Saga
"	19	Thursday	Patricia
"	21	Saturday	Suecia
"	21	Saturday	Saga
"	24	Tuesday	Patricia
"	26	Thursday	Saga
"	28	Saturday	Britannia
"	28	Saturday	Patricia
"	31	Tuesday	Saga

Aug.	2	Thursday	Patricia
"	4	Saturday	Suecia
"	4	Saturday	Saga
"	7	Tuesday	Patricia
"	9	Thursday	Saga
"	11	Saturday	Britannia
"	11	Saturday	Patricia
"	14	Tuesday	Saga
"	16	Thursday	Patricia
"	18	Saturday	Suecia
"	18	Saturday	Saga
"	21	Tuesday	Patricia
"	23	Thursday	Saga
"	25	Saturday	Britannia
"	25	Saturday	Patricia
"	28	Tuesday	Saga
"	30	Thursday	Patricia

Sept.	1	Saturday	Suecia
"	1	Saturday	Saga
"	4	Tuesday	Patricia
"	6	Thursday	Saga
"	8	Saturday	Britannia
"	8	Saturday	Patricia
"	10	Monday	Saga
"	12	Wednesday	Suecia
"	15	Saturday	Britannia
"	17	Monday	Saga
"	19	Wednesday	Suecia
"	22	Saturday	Britannia
"	24	Monday	Saga
"	26	Wednesday	Suecia
"	29	Saturday	Britannia

The crossing takes two nights and one day and passengers are landed in Gothenburg at 7.00 a.m.

Subject to alteration without notice.

Gothenburg—London

Ship leaves Gothenburg
at 7.00 p.m.

April	3	Tuesday	Suecia
"	7	Saturday	Britannia
"	10	Tuesday	Suecia
"	14	Saturday	Britannia
"	17	Tuesday	Suecia
"	21	Saturday	Britannia
"	24	Tuesday	Suecia
"	28	Saturday	Saga
"	28	Saturday	Britannia

May	2	Wednesday	Britannia
"	5	Saturday	Suecia
"	8	Tuesday	Saga
"	12	Saturday	Britannia
"	15	Tuesday	Saga
"	19	Saturday	Suecia
"	22	Tuesday	Saga
"	23	Wednesday	Patricia
"	26	Saturday	Britannia
"	29	Tuesday	Saga
"	31	Thursday	Patricia

June	2	Saturday	Suecia
"	2	Saturday	Saga
"	5	Tuesday	Patricia
"	7	Thursday	Saga
"	9	Saturday	Britannia
"	9	Saturday	Patricia
"	12	Tuesday	Saga
"	14	Thursday	Patricia
"	16	Saturday	Suecia
"	16	Saturday	Saga
"	19	Tuesday	Patricia
"	21	Thursday	Saga
"	23	Saturday	Britannia
"	23	Saturday	Patricia
"	26	Tuesday	Saga
"	28	Thursday	Patricia
"	30	Saturday	Suecia
"	30	Saturday	Saga

July	3	Tuesday	Patricia
"	5	Thursday	Saga
"	7	Saturday	Britannia
"	7	Saturday	Patricia

July	10	Tuesday	Saga
"	12	Thursday	Patricia
"	14	Saturday	Suecia
"	14	Saturday	Saga
"	17	Tuesday	Patricia
"	19	Thursday	Saga
"	21	Saturday	Britannia
"	21	Saturday	Patricia
"	24	Tuesday	Saga
"	26	Thursday	Patricia
"	28	Saturday	Suecia
"	28	Saturday	Saga
"	31	Tuesday	Patricia

Aug.	2	Thursday	Saga
"	4	Saturday	Britannia
"	4	Saturday	Patricia
"	7	Tuesday	Saga
"	9	Thursday	Patricia
"	11	Saturday	Suecia
"	11	Saturday	Saga
"	14	Tuesday	Patricia
"	16	Thursday	Saga
"	18	Saturday	Britannia
"	18	Saturday	Patricia
"	21	Tuesday	Saga
"	23	Thursday	Patricia
"	25	Saturday	Suecia
"	25	Saturday	Saga
"	28	Tuesday	Patricia
"	30	Thursday	Saga

Sept.	1	Saturday	Britannia
"	1	Saturday	Patricia
"	4	Tuesday	Saga
"	6	Thursday	Patricia
"	8	Saturday	Suecia
"	8	Saturday	Saga
"	11	Tuesday	Britannia
"	13	Thursday	Patricia
"	15	Saturday	Suecia
"	15	Saturday	Saga
"	18	Tuesday	Britannia
"	22	Saturday	Suecia
"	22	Saturday	Saga
"	25	Tuesday	Britannia
"	29	Saturday	Suecia
"	29	Saturday	Saga

The crossing takes two nights and one day and passengers are landed at Tilbury at 7.00 a.m. Boat-train arrives at St. Pancras Station about three hours later.

Subject to alteration without notice.



Gripsholm Castle.

Through fares between London and Oslo

Passengers from London to Oslo or vice versa can obtain, when travelling first class by boat, a second class railway ticket from Gothenburg to Oslo, or vice versa, and those travelling second or third class by boat, a third class railway ticket at an extra charge of £1.0.0 or Kr. 15:— respectively. These railway coupons *must be applied for* at the time of booking the boat ticket.

Swedish and Norwegian railway coupons are valid for two months only.

CARS, MOTORCYCLES AND BICYCLES

Cars, motorcycles and bicycles may be taken by passengers for their own use at the following charges, including all costs of loading and discharging.

Particulars should be given as to accompanying passengers, cabin numbers, as well as the make of the car or the motorcycle, together with its registration number and weight.



If these steps have not been taken there is no guarantee that the vehicle can be taken on board.

For those passengers who bring a car or motorcycle the steamer fare does not include a railway ticket between London and Tilbury, and no reduction will be allowed on this account. No through fares apply to passengers with motorcars or motorcycles.

A carnet or triptyque as well as other car documents must be presented before the loading of the car. These documents are issued by the Royal Automobile Club (RAC) or the Automobile Association (AA).

Cars and motorcycles must be handed over at the ship for loading and checking of documents *not later than 3 hours* before departure.

In case of lack of space in the holds for passengers' cars, these will be loaded on deck.

The Museum of Arts, Gothenburg.



Passengers bringing cars should observe that *no luggage whatever* (not even overcoats etc.) may be left in the car when it is loaded.

The quantity of petrol in the tanks of vehicles shipped must under no circumstances exceed two gallons.

Charges

Cars weighing up to	If accompanied by 1 passenger £	Kr.	If accompanied by 2 passengers £	Kr.
15 cwts. or 750 kgms.	4.—.—	55:—	2.10.—	35:—
25 cwts. or 1,250 kgms.	6.—.—	85:—	4.—.—	55:—
35 cwts. or 1,750 kgms.	8.—.—	115:—	5.10.—	75:—
over 35 cwts. or 1,750 kgms.	10.—.—	145:—	7.—.—	95:—
Trailer, any weight or number of passengers accompanying £4.—.—; Kr. 55:—				

*If three full paying passengers accompany
a car, it is transported free.*

Motorcycle	If accompanied by 1 passenger £	Kr.	If accompanied by 2 passengers £	Kr.
with side-car	2.—.—	30:—	1. 5.—	20:—
without side- car	1.—.—	15:—	1.—.—	15:—

*These concessions are allowed if the
tickets for all the accompanying passen-
gers are bought at the same time.*

Bicycle	0.16.3	11: 80
Tandem	1. 4.4	17: 65

Useful addresses

LONDON

THE SWEDISH EMBASSY

29, Portland Place. W.1
Telephone: LANgham 2080

THE SWEDISH CONSULATE GENERAL

14, Trinity Square, E.C.3
Telephone: ROYal 1901

THE SWEDISH CHAMBER OF COMMERCE

14, Trinity Square, E.C.3
Telephone: ROYal 2378

THE SWEDISH CHURCH

11, Harcourt Street, Marylebone, W.1
Telephone: PADdington 5681

THE SWEDISH INSTITUTE

49, Egerton Crescent, S.W.3
Telephone: KENSington 2511

THE ANGLO-SWEDISH SOCIETY

4, Staple Inn, High Holborn, W.C.1
Telephone: HOLborn 3023

THE SWEDISH TRAVEL BUREAU

21 & 22, Coventry Street, W.1 (corner of Haymarket)
Telephone: WHItchall ~~7767~~ 8161

GOTHENBURG

THE BRITISH CONSULATE GENERAL

Kungsportsavenyen 1
Telephone: 13 62 81

THE ANGLO-SWEDISH SOCIETY

Arkivgatan 1
Telephone: 16 81 23

THE BRITISH CHURCH

Hvitfeldtsplatsen

A typical fishing village, Swedish West Coast.





Ancient rock carving.

STOCKHOLM

THE BRITISH EMBASSY

Strandvägen 82
Telephone: 67 01 40

THE BRITISH CONSULATE GENERAL

Hovslagaregatan 5 B
Telephone: 20 64 70

THE BRITISH CHURCH

Diplomatstaden

SVENSK-ENGELSKA FÖRENINGEN (The Swedish-British Society)

Sturegatan 10
Telephone: 60 73 39

SOME PRACTICAL HINTS

Swedish money

According to the rate of exchange which was established on July 13th, 1946, one pound is equivalent to Swedish Kronor 14:50. One

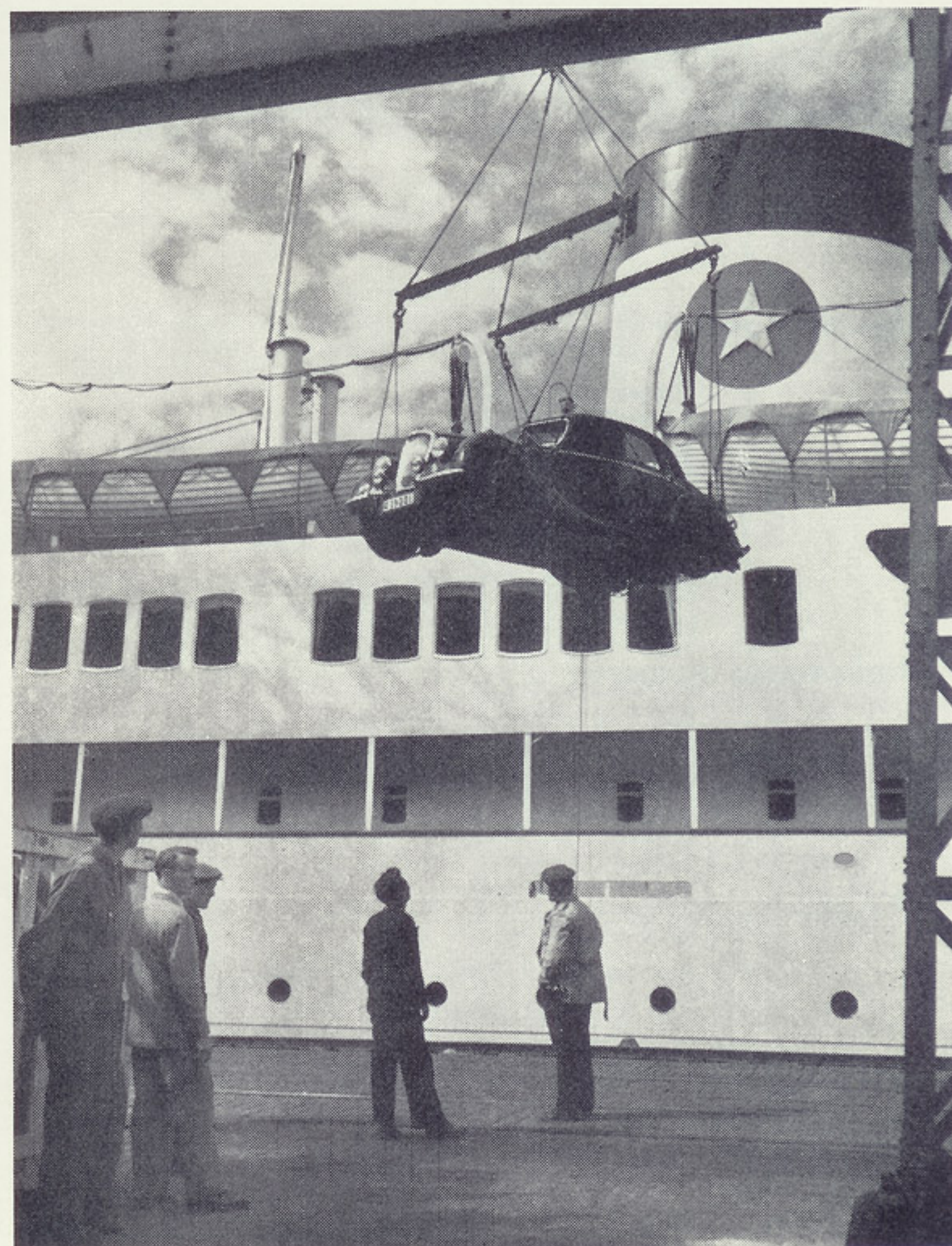


shilling is thus worth about 70 öre and one penny about 6 öre.

In addition to notes for 1,000, 100, 50, 10 and 5 kronor the following coins exist:

Silver	Bronze
2 kronor	5 öre
1 krona	2 öre
50 öre	1 öre
25 öre	
10 öre	

Bring your car with you!



"Britannia" - "Suecia"

ORDINARY FARES

(Inclusive of meals on board)

DORMITORY ACCOMMODATION

Berth in dormitory accommodation £ 7. 5.0 Kr. 105:—

III CLASS

Berth in two- or four-berth cabin » 8. 5.0 » 120:—

I CLASS

Berth in single, double or three-berth cabin on C-deck » 14. 5.0 » 210:—

Berth in single or double cabin on B-deck » 17.15.0 » 260:—

Berth in inside double cabin with private toilet on B-deck » 20.15.0 » 300:—

Berth in single or outside double cabin with private toilet on B-deck » 22.15.0 » 330:—

Berth in Cabin de Luxe (2 A/C 6 A/C) with bathroom on B-deck » 24. 5.0 » 350:—
If sitting-room (No. 4) is required, extra » 5. 0.0 » 75:—

Passenger requiring double cabin for sole use will have to pay double fare.

Children between 4 and 12 years travel for half fare and children under 4 travel free, provided that tickets are taken for all the berths in the cabin.


ACCOMMODATION PLAN



ORDINARY FARES

(Inclusive of meals on board)

DORMITORY ACCOMMODATION

 Berth in dormitory accommodation £ 7.5.0 Kr. 105:—


III CLASS

 Berth in four-berth cabin » 8.5.0 » 120:—


II CLASS


 Berth in double cabin .. » 11.5.0 » 165:—


I CLASS

 Berth in double cabin on C-deck » 14.5.0 » 210:—

 Berth in single cabin on C-deck » 17.15.0 » 260:—

 Berth in inside single cabin with private toilet on B-deck » 20.15.0 » 300:—

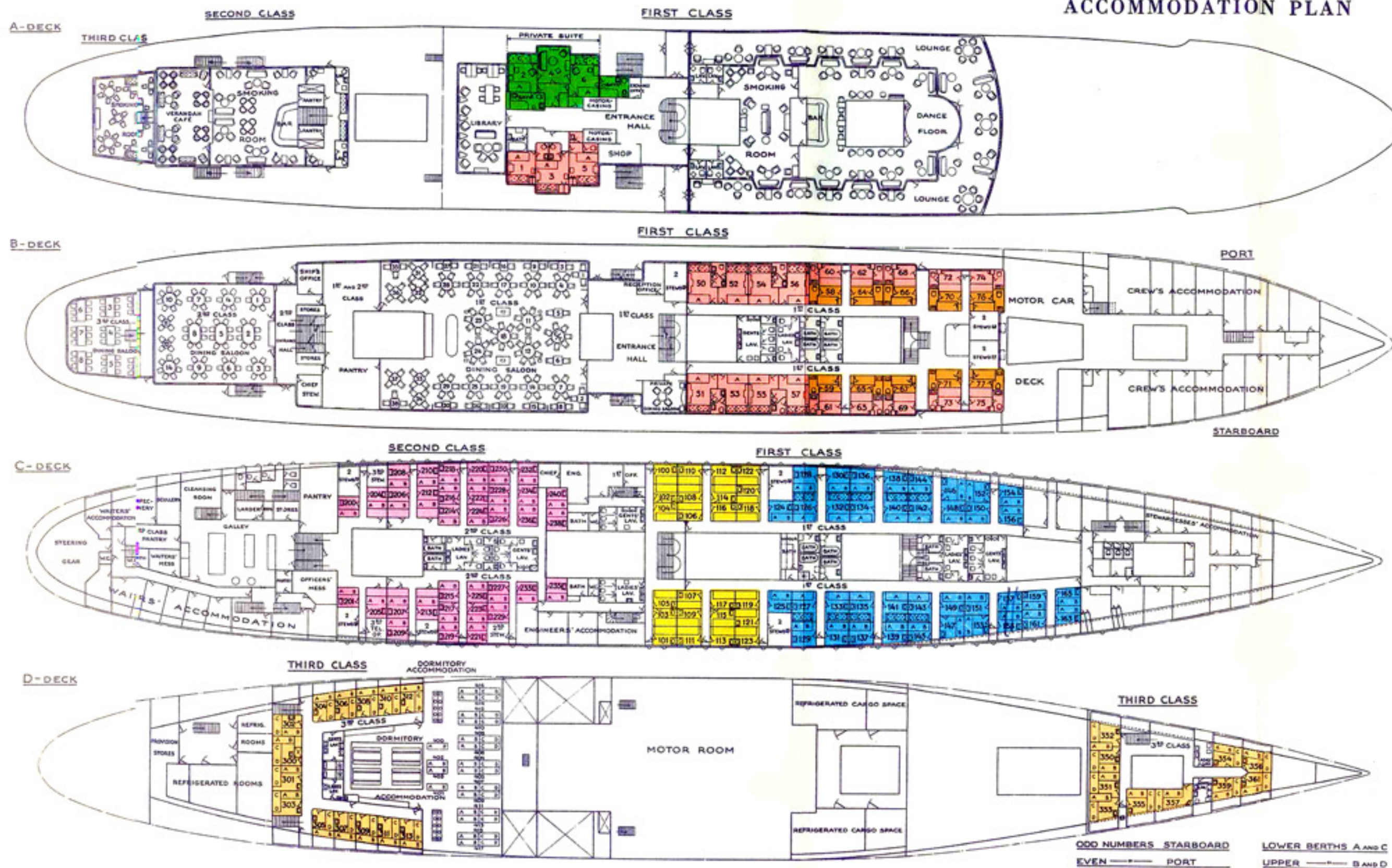
 Berth in outside single cabin with private toilet on B-deck or outside double cabin with private toilet on A- or B-deck » 22.15.0 » 330:—

 Berth in Cabin de Luxe (2 A/C 6 A/C) with bathroom on A-deck » 24.5.0 » 350:—
If sitting-room (No. 4) is required, extra » 5.0.0 » 75:—

Passenger requiring double cabin for sole use will have to pay double fare.

Children between 4 and 12 years travel for half fare and children under 4 travel free, provided that tickets are taken for all the berths in the cabin.

ACCOMMODATION PLAN













SWEDISH LLOYD

"Patricia"

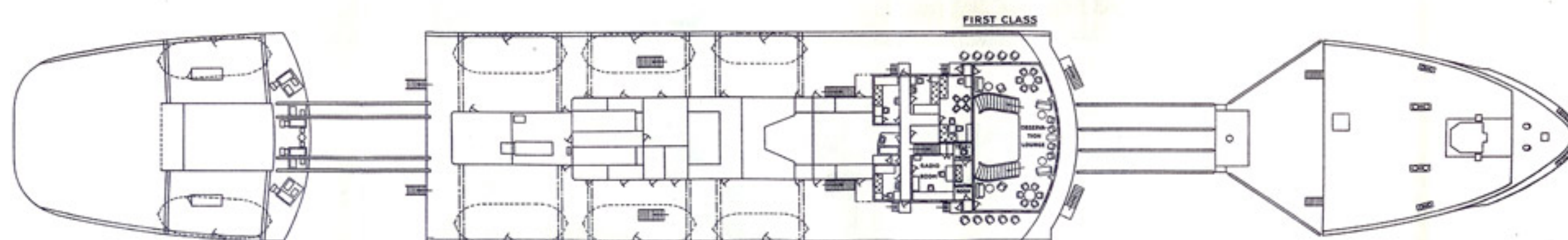
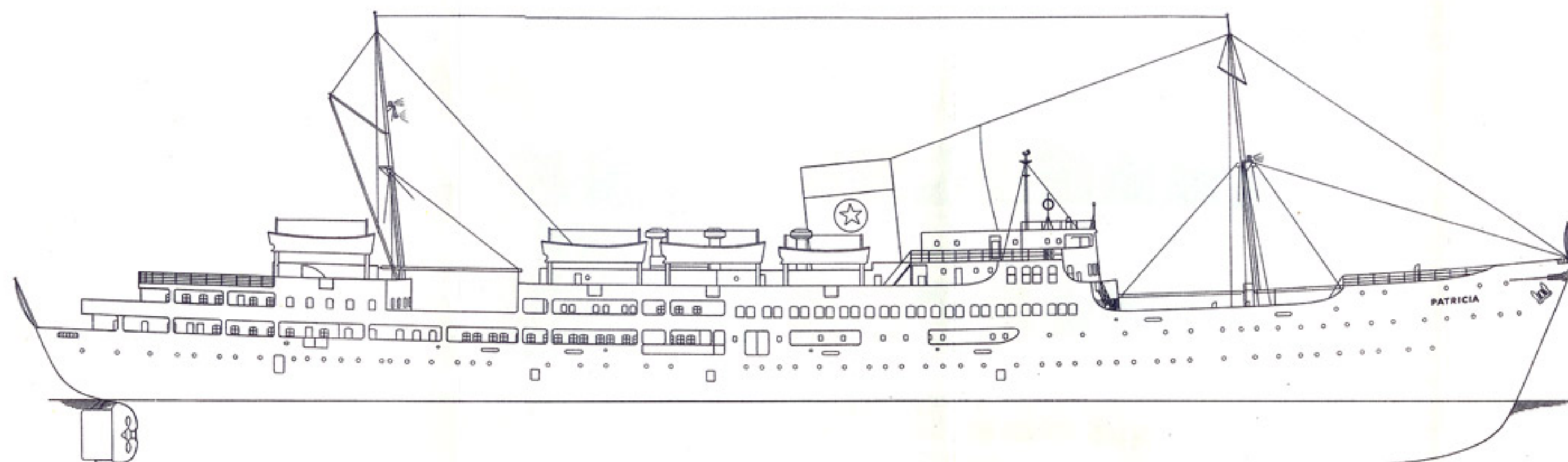
ORDINARY FARES
(Inclusive of meals on board)

DORMITORY ACCOMMODATION

	Berth in dormitory accommodation	£ 7.5.0	Kr. 105:—
	III CLASS Berth in two- or four-berth cabin	8.5.0	120:—
	II CLASS Berth in double or three-berth cabin	11.5.0	165:—
	I CLASS Berth in double or three-berth cabin on C-deck ..	14.5.0	210:—
	Berth in single cabin on C-deck	17.15.0	260:—
	Berth in inside single cabin with private toilet on B-deck	20.15.0	300:—
	Berth in outside single or double cabin with private toilet on B-deck	22.15.0	330:—
	Berth in Cabin de Luxe (1 A/C 3 A/C 5 A/C) with bathroom on A-deck ..	24.5.0	350:—
	Berth in Cabin de Luxe (2 A/C 6 A/C) with bathroom on A-deck	24.5.0	350:—
	If sitting-room (No. 4) is required, extra	5.0.0	75:—
	Cabin de Luxe No. 8 A/C with sitting-room and bathroom on A-deck for 1 or 2 persons	48.10.0	700:—

Passenger requiring double cabin for sole use will have to pay double fare.

Children between 4 and 12 years travel for half fare and children under 4 travel free, provided that tickets are taken for all the berths in the cabin.



ACCOMMODATION PLAN



PATRICIA